

PART OF THE SE 1/4, SEC. 14 & PART OF THE NE 1/4 OF SEC. 23, T.5N., R.1W., S.L.B. & M.

171

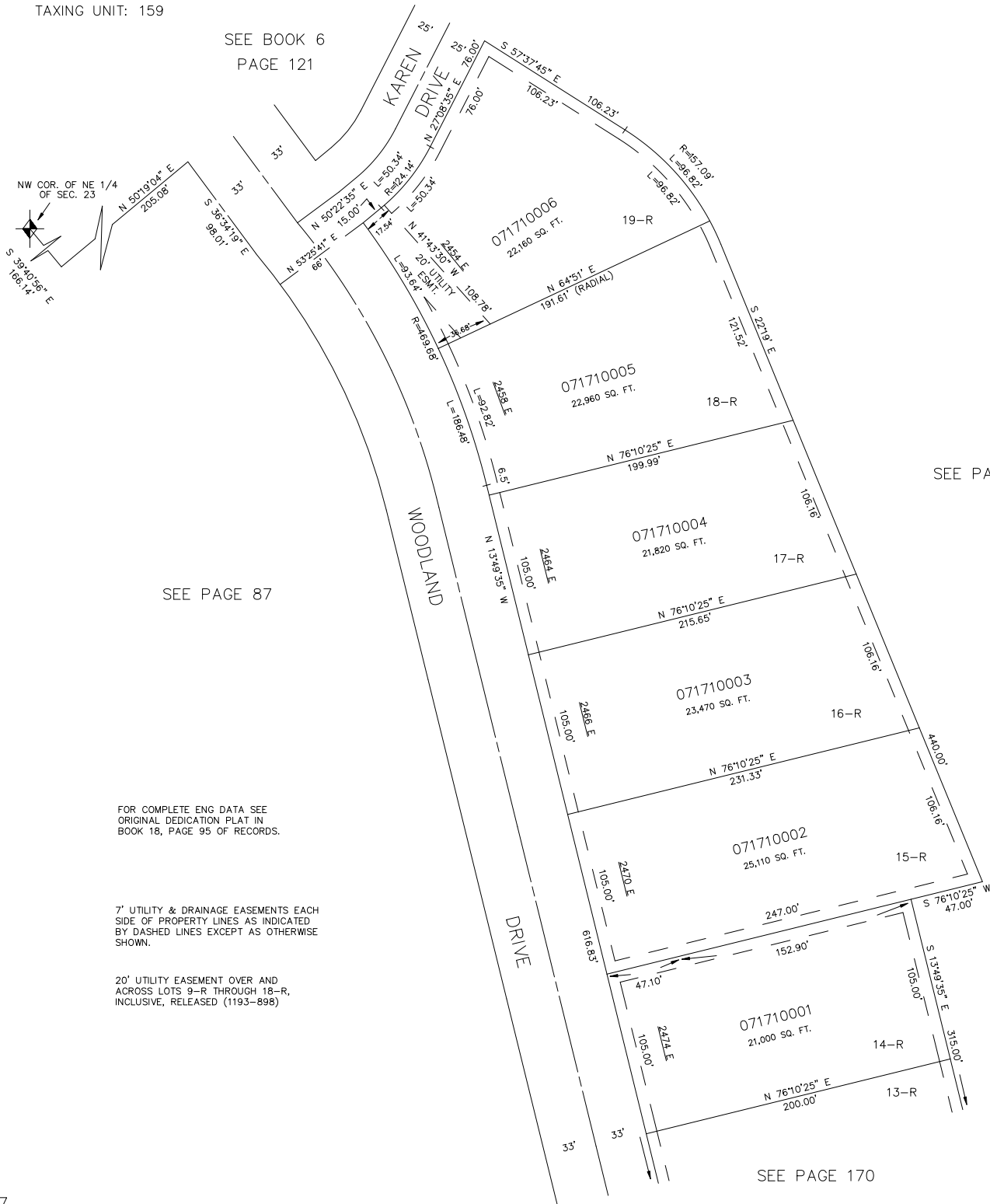
## BONNEVILLE TERRACE SUBDIVISION NO. 2

IN WEBER COUNTY

SCALE 1" = 50'

TAXING UNIT: 159

SEE BOOK 6  
PAGE 121



SEE PAGE 87

SEE PAGE 87

SEE PAGE 170